

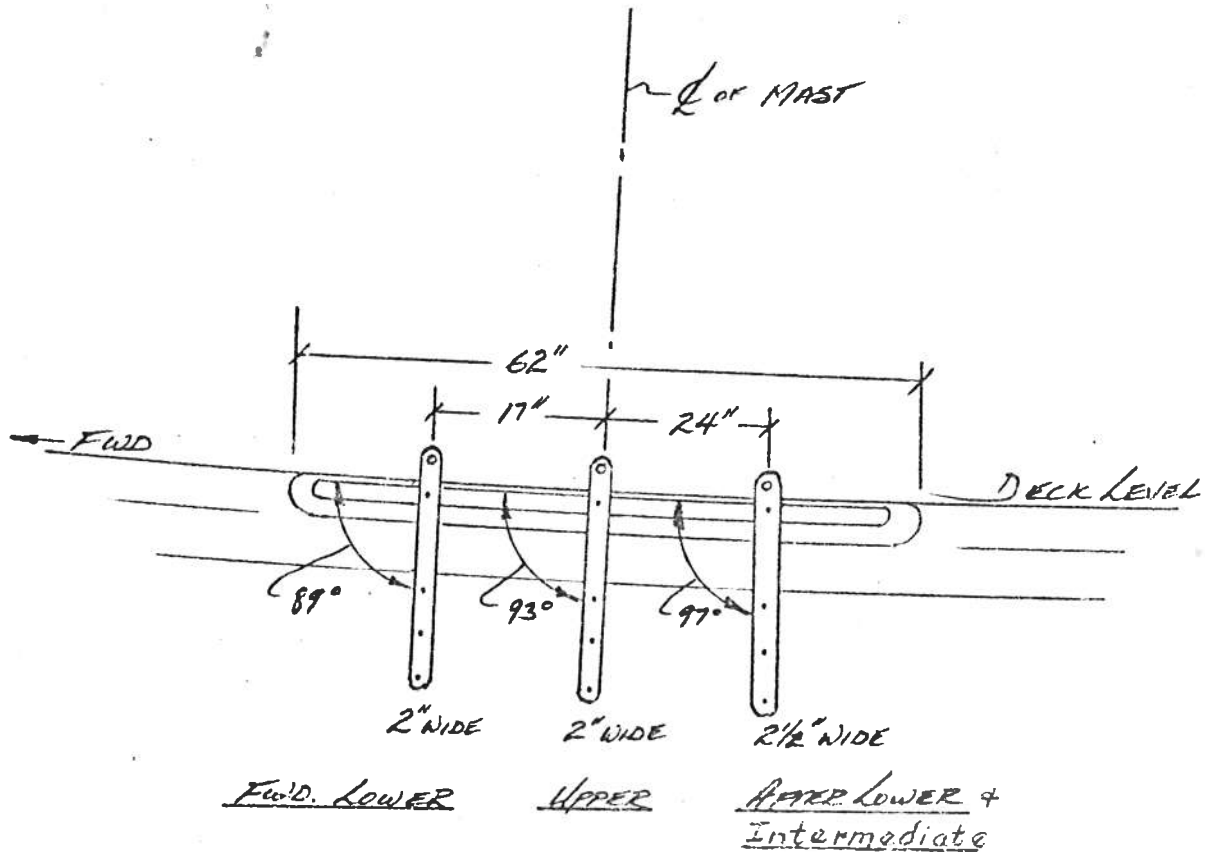
CHAINPLATE DETAIL

MATERIALS

CHAINPLATES

- 24 $\frac{3}{8}$ " x $1\frac{1}{2}$ " S.S. CARR. BOLTS, HEX NUTS, LOCK WASHERS
- 30 $2\frac{1}{2}$ " x $\frac{3}{8}$ " S.S. WASHERS
- 6 $\frac{3}{8}$ " x $5\frac{1}{2}$ " S.S. CARR. BOLTS, HEX NUTS, LOCK WASHERS
- 1 3M #101 OR WHITE LIFE CAULK

CHAINPLATE LAYOUT FOR DOUBLE SPREADER RIG



BULWARK STANCHION BEVELS

Knighthead	0°
#1 Stanchion	3°
2	6°
3	7°
4	8°
5	10½°
6	10½°
7	11½°
8	12°
9	14°
10	13°
11	12°
12	13°
13	15°
14	16°
Otr Timber	17°

When all bevels are cut, set stanchions in place on cover board and carefully check by eye to see if any adjustments are needed to make the bulwark line perfectly fair.

Mark stanchion locations on deck, inboard of cover board recess, before installing cover boards.

#14 stanchion aft will be centered between deck/hull bolts about 5" forward of aft end of cockpit. Then space 20" O/C going forward. #1 stanchion will fall about 5" aft of bitt location. Then a space of 17½", then Knighthead, which is 15" long x 2-1/8" thick. Be sure space left forward is adequate for the chain.

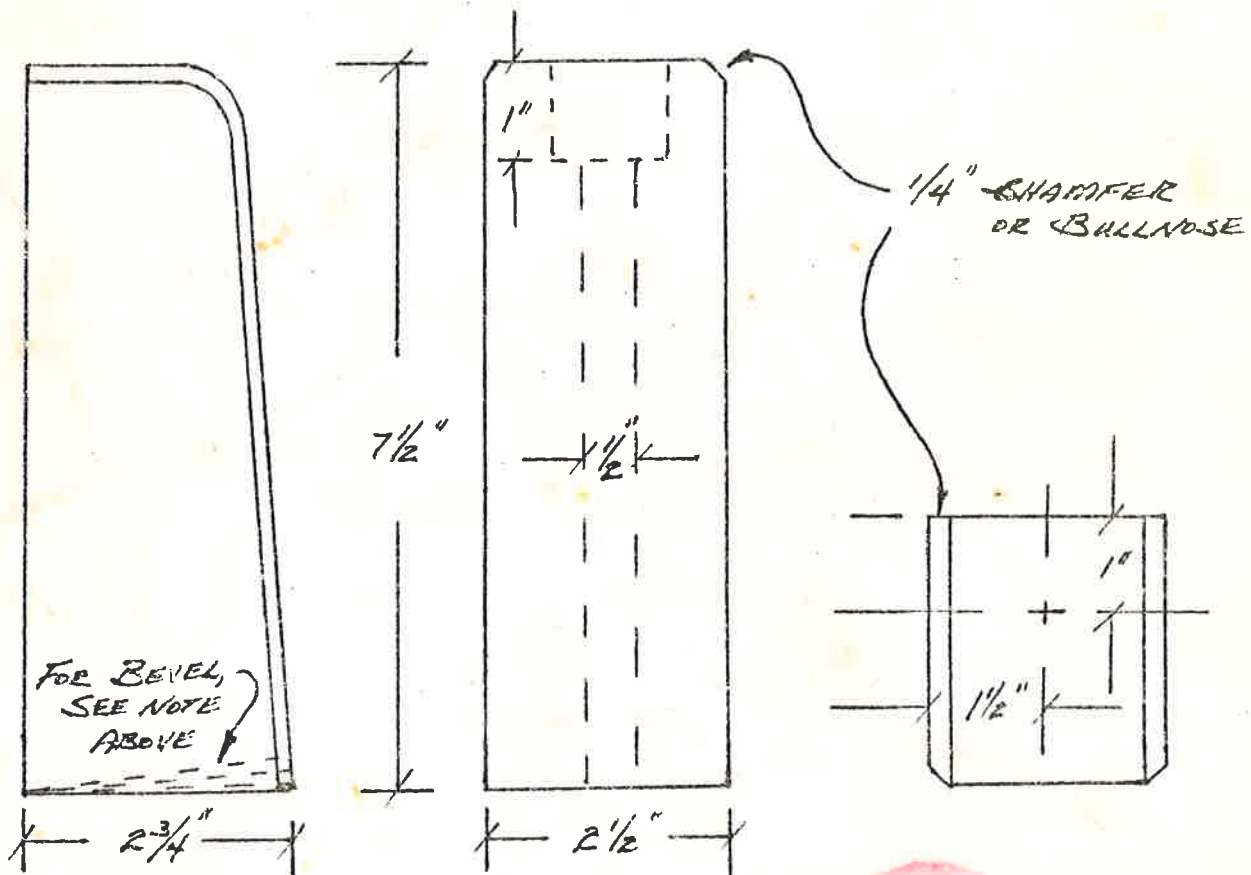
BULWARK STANCHIONS

MATERIALS

FASTENINGS PER STANCHION:

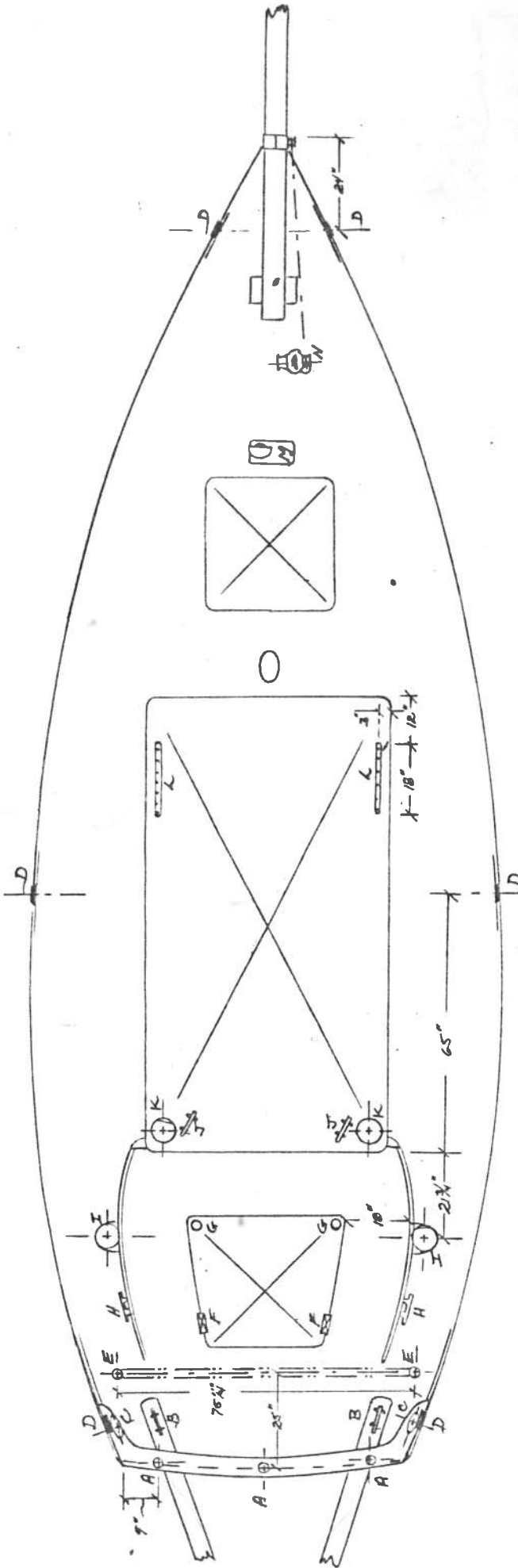
- 1 - 9" LENGTH $\frac{1}{2}$ " S.S. THREADED ROD
- 1 - $\frac{1}{2}$ " S.S. FLAT WASHER
- 1 - $\frac{1}{2}$ " x 2" S.S. FLAT WASHER
- 2 - $\frac{1}{2}$ " x S.S. HEX NUTS
- 1 - $\frac{1}{2}$ " x (I.D.) x $\frac{9}{32}$ " O.D. NEOPRENE "O" RING

NOTE: THE $7\frac{1}{2}$ " VERTICAL DIMENSION ON THE PLANK SIDE REMAINS CONSTANT - BEVEL STANCHION BASES TO CONFORM TO DECK CROWN $\frac{1}{4}$ " TO CARRY OUT THE TUMBLEHOME OF THE TOPSIDES.



Bertha Chamber Cover - Deck Layout

Some BRASS MOUNTING SCREWS



(Located Between Stanchions 8 Ft)

KEY to Fittings

- A. 4" SAWEE BLOCKS (3)
- B. 10" CLEATS (2)
- C. DRIFTER TURNING BLOCKS (2)
- D. HAWSE (3 PER SIDE)
- E. BOW GALLONS BASES (2)
- F. VENTILATORS
- G. 1 1/2" COCKLE DRAINS (2)
- H. 8" CLEATS (2)
- I. 1/2" SAWEE BLOCKS

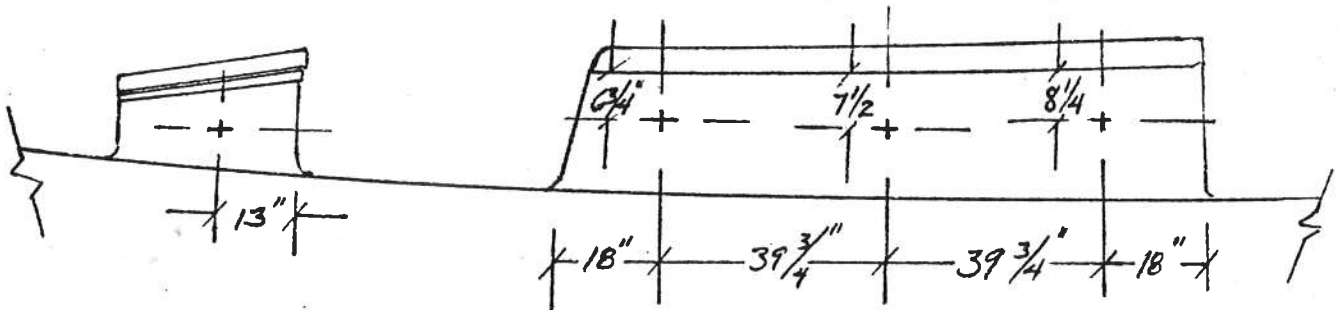
- J. 4" CLEATS (2)
- K. STAYSAIL SHEET WINCHES
- L. STAYSAIL SHEET TRUCK (PFS)
- M. DORADE-TYPE VENTILATOR
- N. MOUNTS

PORTLIGHT LOCATIONS

MATERIALS

6 - 7" DIA PORTS FOR COACHROOF } ROSTAND OR EQUIVALENT
2 - 5" DIA PORTS FOR SCUTTLE }
72 - 1/4" x 1 1/2" SIL. BRNZ. R.H. BOLTS

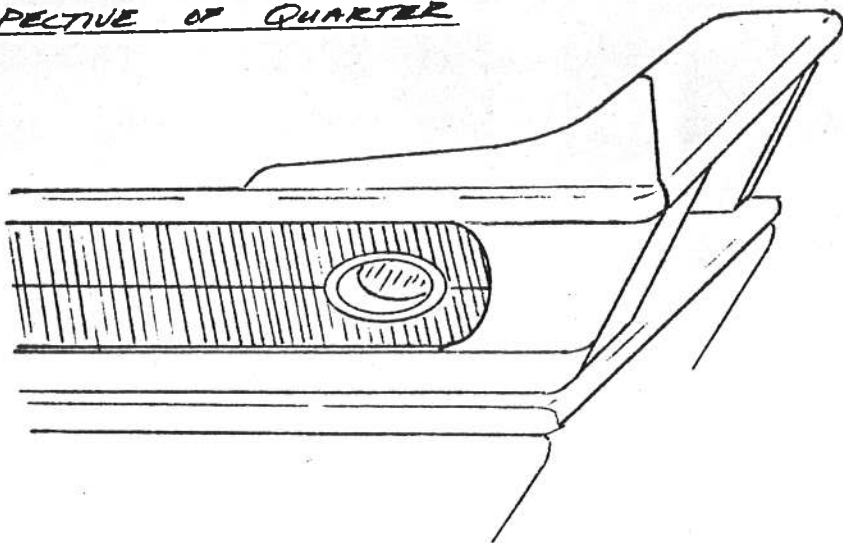
NOTE: VERTICAL DIMENSIONS MEASURED
DOWN FROM EDGE OF COACHROOF
NON-SKID SURFACE



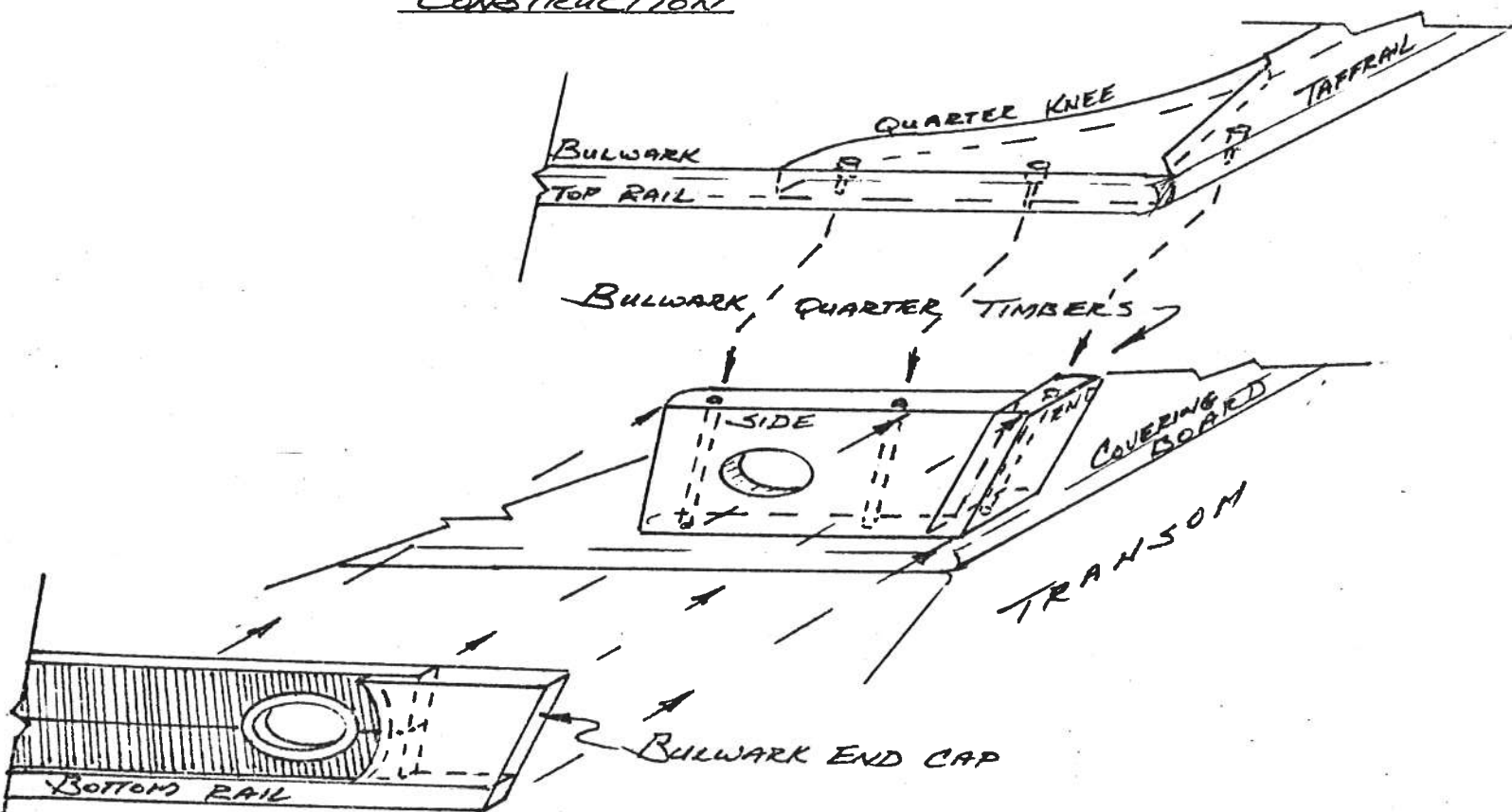
NOTE: { FOR 7" ROSTAND PORTS, CUT HOLES 7 5/16" DIA.
 { FOR 5" ROSTAND PORTS, CUT HOLES 5 5/16" DIA
 L L L Deadlights - 5 13/16 L

TAFFRAIL

PERSPECTIVE OF QUARTER

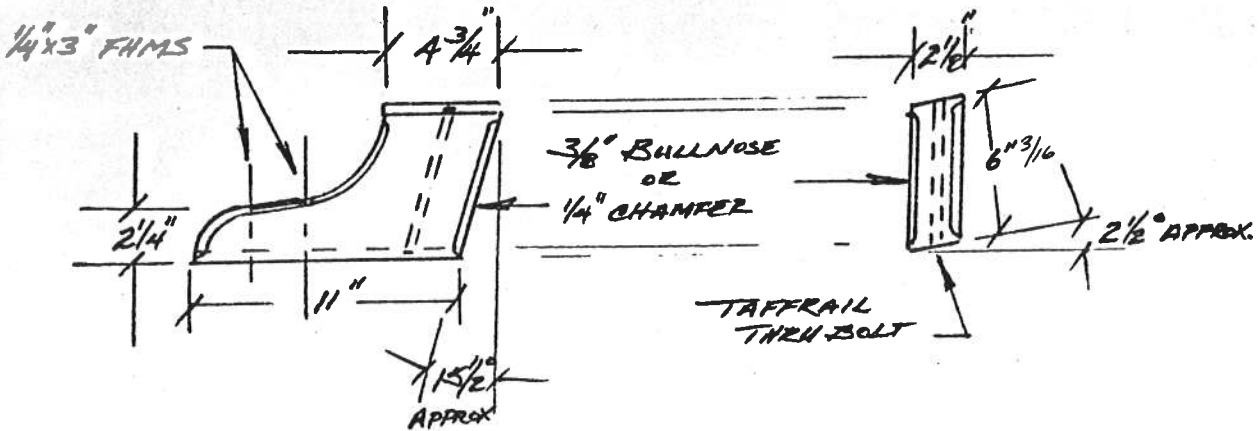


EXPLODED VIEW OF QUARTER
CONSTRUCTION

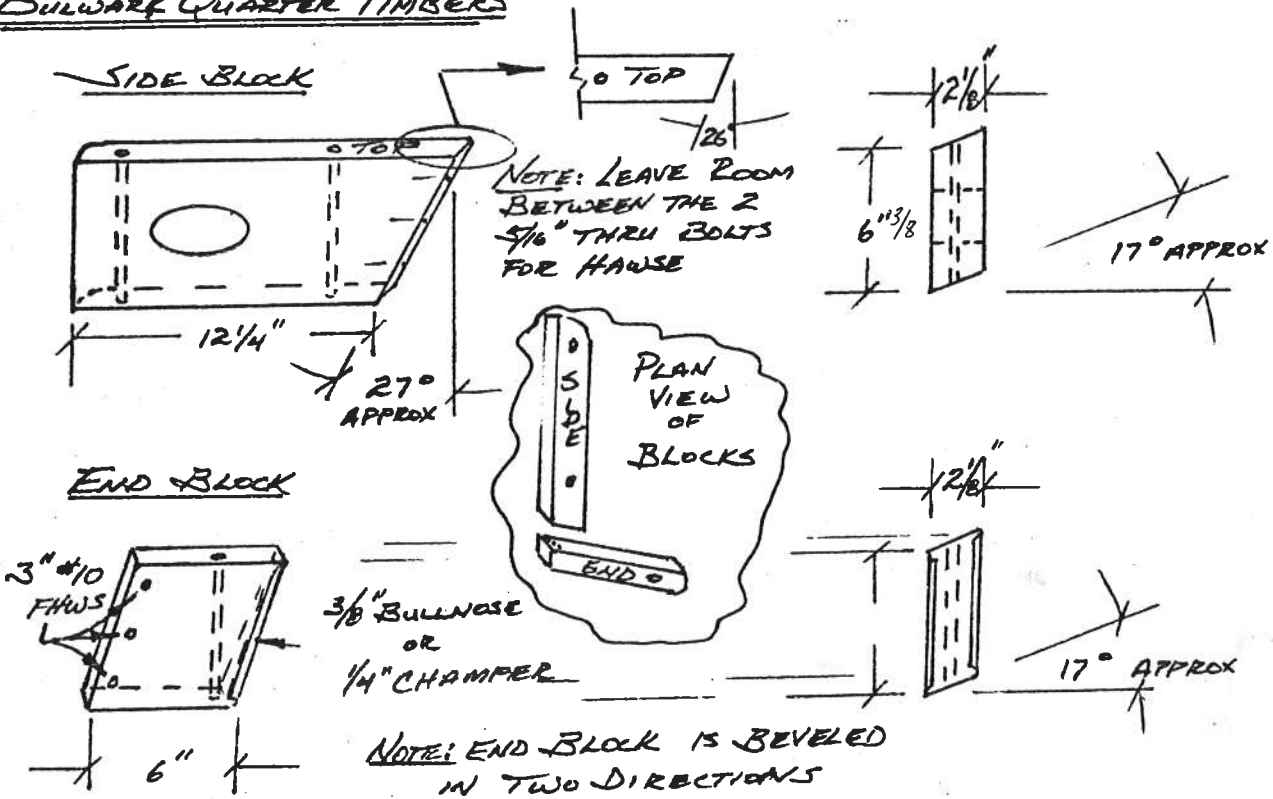


TAFFRAIL DETAILS

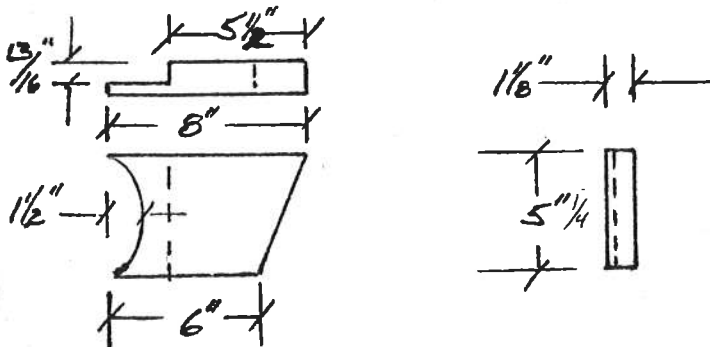
CENTER KNEES



BULWARK QUARTER TIMBERS



BULWARK END CAP



TAFFRAIL

LIST OF MATERIALS

TAFFRAIL STOCK

- (3) $7/16" \times 7" \times 72"$
- (1) $15/16" \times 13" \times 42"$

QUARTER TIMBER STOCK

$2'8" \times 7" \times 54"$

CENTER KNEES STOCK

$2'8" \times 7" \times 17"$

FASTENINGS

- (4) ~~$5/16" \times 9/16"$ SS FHMS~~
- ~~$1/4"$ THREADED SS ROD~~
- ~~$1/4"$ SS FHMS (SEE DWGS)~~

- (8) $5/16" \times 9/16"$ SS FHMS
- (4) $1/4" \times 3"$ SS FHMS
- (6) #10 X 3" SS FHWS

NUTS & LOCK WASHERS FOR ALL FHMS ABOVE

GENERAL LAYOUT

